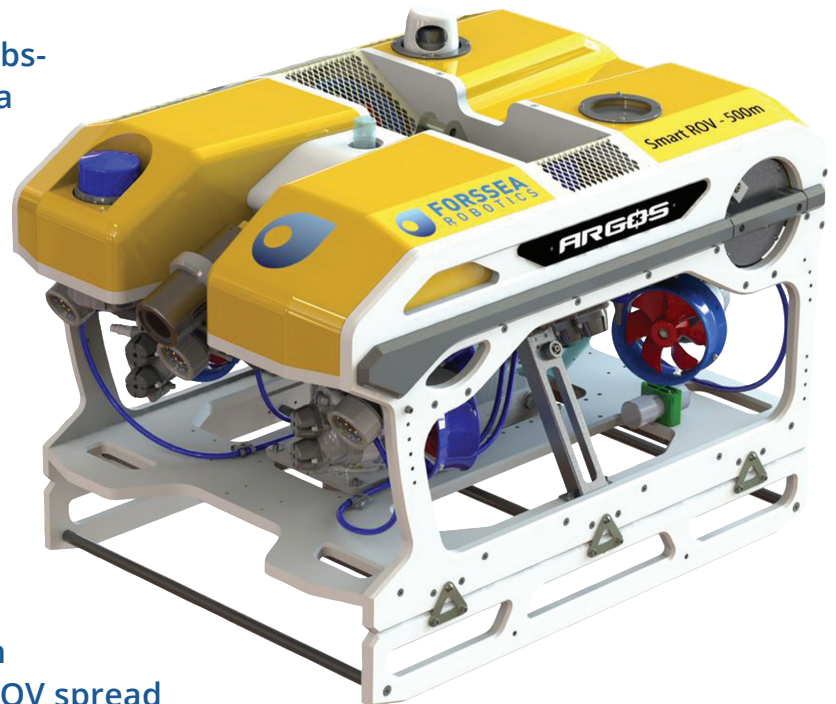


Light Intervention & Survey ROV

ARGOS ROV is a compact and modern Obs-Class II ROV designed to enhance subsea operation efficiency in free-flying mode from light vessels. Easily configurable with market leading tooling and survey sensor, ARGOS is reshaping the way we perform subsea surveys while keeping a high safety standard.

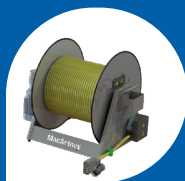
ARGOS has a significant track record working in Oil & Gas (Brazil, Malaysia, Angola) and European offshore wind fields up to 120m water depth from various opportunity vessels or fixed platforms. Available globally under both service or leasing agreements, ARGOS ROV spread is delivered "ready to dive" with all necessary tooling for +3m of continuous operation.



STANDARD CONFIG.



Argos ROV



Winch + 250m Tether



15kW Power Surface Unit



Pilot Station and Screens



Free Fly Kit

+ Complete Spares & Maintenance Toolkits

Fully packed within 3x 200kg pallets

EXTRA OPTIONS



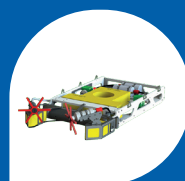
Sonar



Video Recording



CP, UT, FMD Sensor / Probe



Cleaning Brush



10ft Mobile Crane & Control Room

Various Custom Skid Available (TSS660, Bravo 5F Manipulator...)

SURVEY CONFIG.



INS / DVL (advanced DP and autonomous fly mode)



Vessel & ROV GPS (USBL free operation)



Visual Navigation (coming soon)

DIMENSIONS & PERFORMANCE

Depth Rating	500m (Option 1000m)
Weight in Air	170kg (Including payload)
Length	1100mm
Width	790mm
Height	684mm ; 819 (w/ INS + DVL Skid)
Power at ROV	7kW
Payload	20kg
Through Frame Lift	60kg
Thrusters Horizontal	4x SPE-75
Thrusters Vertical	2x SPE-75

THRUST

Fwd/Aft	90kgf
Port/Stbd	52kgf
Vertical (up)	40kgf

SPEED

Fwd	2.6 knt
Aft	2.2 knt
Lateral	1.8 knt
Vertical	1.5 knt

SYSTEM & OPTIONS

STANDARD CONFIGURATION

AHRS and mini-DVL

- Station keeping mode
- Auto heading, depth, altitude

SMART SURVEY CONFIGURATION

Precalibrated Rovins Nano + Nortek DVL

- Advanced Dynamic Positioning Mode
- Go-To Mode w/ waypoint management
- Visual Docking (only w/ NAV CAM)
- API compatible with mission planner

CAMERA & LIGHT

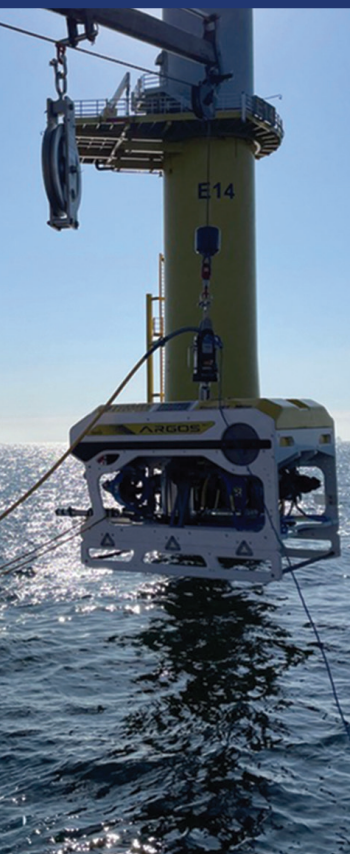
- IP Full HD OBS CAM mounted on tilt w/ position feedback
- IP auxiliary camera (rear or front)
- 4x dimmable CTechnics Lights (4,800 Lumen each)

PAYLOAD

- 3x slots for USBL transponder, GPS and Flasher
- Frame mounted: CP, UT, FMD, SVS, Sonar, Caviblaster
- Skid Mounted (on demand):
 - Electrical manipulator (OceanTool 1F, Reach Bravo 5F)
 - Electrical Cleaning Brush (Lateral FlexiClean Single)
 - MBES (R2 Sonic or equivalent)
 - Pipe Tracker (Teledyne TSS660)

INTERFACE & COM

- Fiber connections: 4x 9/125 Single Mode (1x ROV + Spare ; 1x Client / MUX + Spare)
- I/O: 4x Gbit Ethernet ; 2x Analog (0-10V) ; 4x Serial (RS-232-485)
- Tooling: 6x 24Vdc ; 1x 320Vdc (power pod available for conversion)
- Secured firewall for remote connection, VPN access compatible with OpenVPN, WireGuard, IPSec



Free Flying From Opportunity Vessel

